

1 Brief description

Objective of the module:

In this module you learn the different options of the operating mode “MDA” in the operating area “Machine”.

Description of the module:

This module describes how a program can be loaded directly from the program manager into the MDA-buffer and how the processing of the program is started.

It will be explained how an edited program, created in the working window, is written from the MDA-buffer to any directory on the control unit.

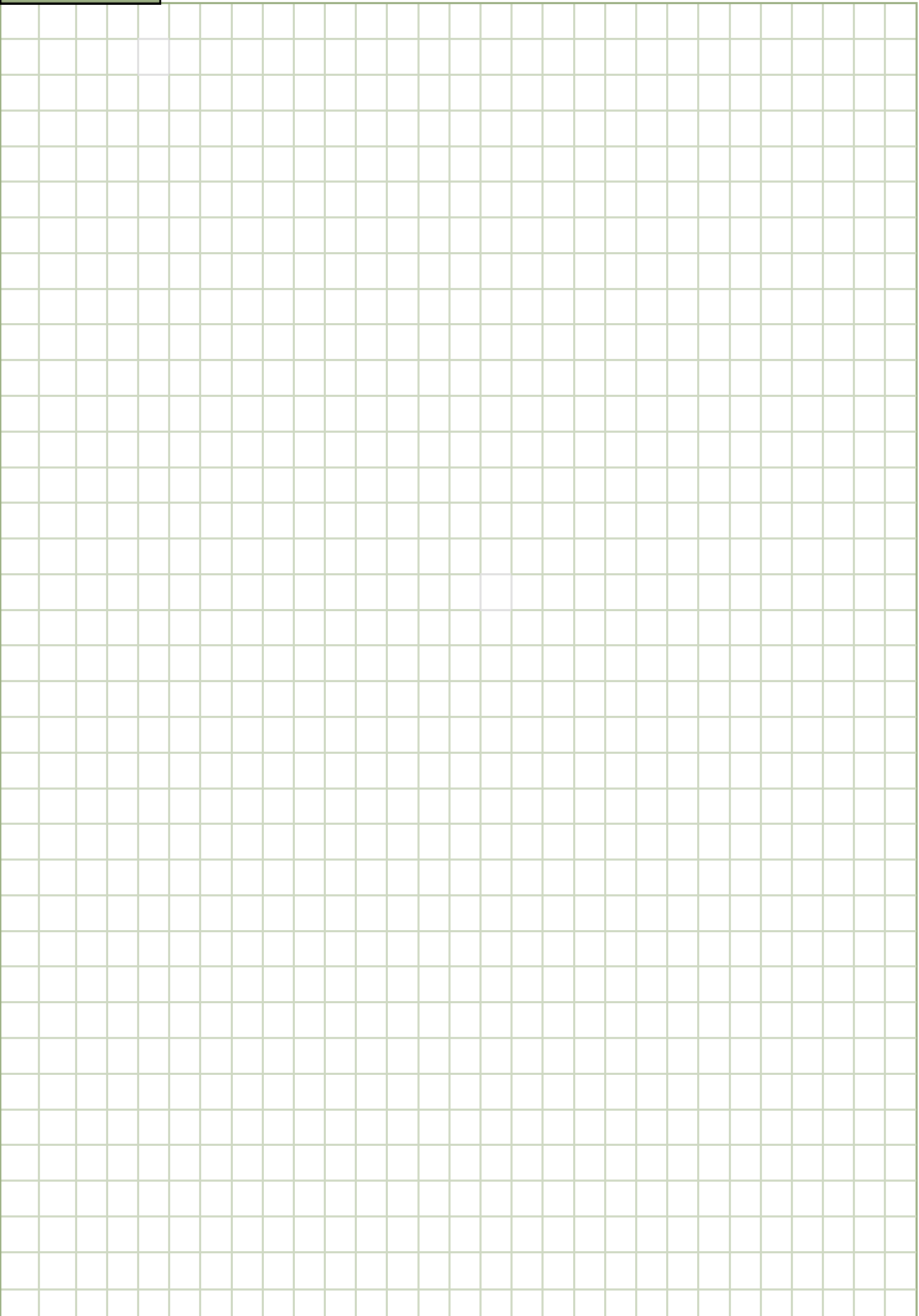
You learn how to create a directory and a workpiece file of the type *.WPD.

Content:

Operating mode “MDA”

“Load MDI”

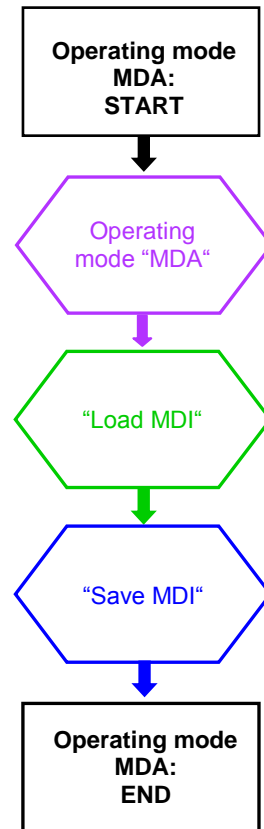
“Save MDI”



Operating mode MDA: Description

This module describes how a program can be loaded directly from the program manager into the MDA-buffer and how the processing of the program is started.

It will be explained how an edited program, created in the working window, is written from the MDA-buffer to any directory on the control unit. You learn how to create a directory and a work-piece file of the type *.WPD.



Notes

Notes

In "MDA" mode (Manual Data Automatic), you can enter G-code commands block-by-block and immediately execute them for setting up the machine.

You can load an MDA program straight from the Program Manager into the MDA buffer. You may also store programs which were rendered or changed in the MDA operating window into any directory of the program manager.

2.1 Selecting the operating mode "MDA"

The operating mode "MDA" can be selected as follows:



Press the "MDA"-key on the operator panel (OP).

The operating mode "MDA" will be opened immediately.

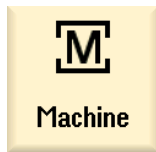
- OR -



Press the "MENU SELECT"-key on the operator panel.

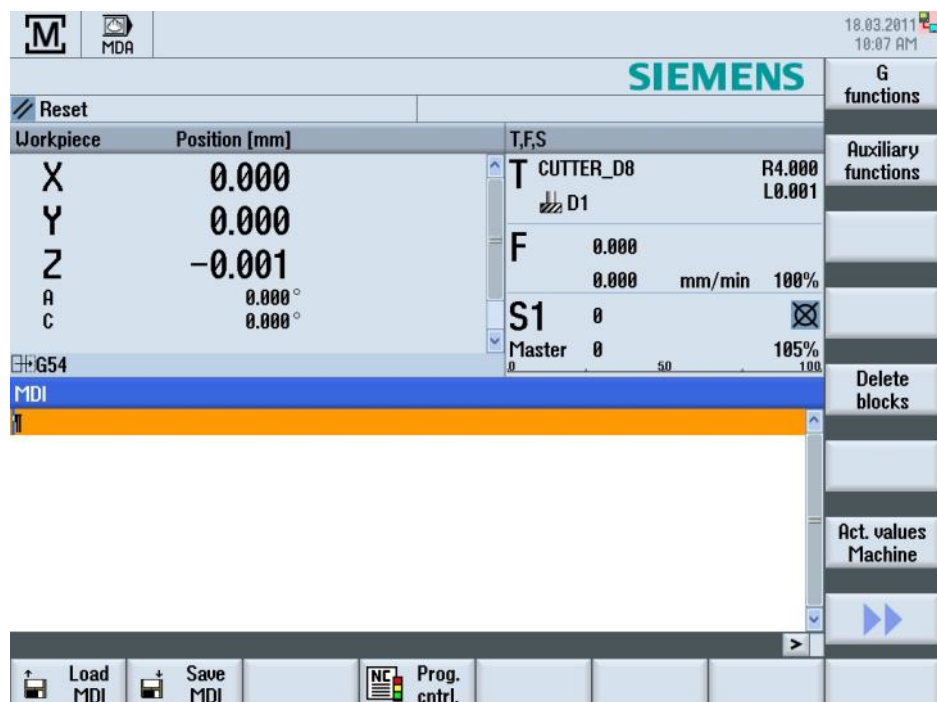


Press the VSK 2 "MDA" in the yellow vertical softkey bar on the right side of the screen and the operating mode "MDA" will be opened immediately.



Now switch to the operating area "Machine" by pressing the "MACHINE" key on the operator panel or on the keyboard or press the "MENU SELECT"-key on the operator panel and the yellow HSK 1 "Machine". The following screen opens:

In the operating mode "MDA" the following softkeys are shown in the horizontal and vertical softkey bar of the Sinumerik Operate:



2.2 Vertical softkey bar

Display area

Description



By pressing the VSK 1.5 “Delete blocks” entered program blocks can be deleted.

2.3 Horizontal softkey bar 1

Display area

Description



By pressing the HSK 1 “Load MDI” the “Load into MDI” with the program manager window opens.



By pressing the HSK 2 “Save MDI” the “Save from MDI : Select storage location” with the program manager window opens.

Notes

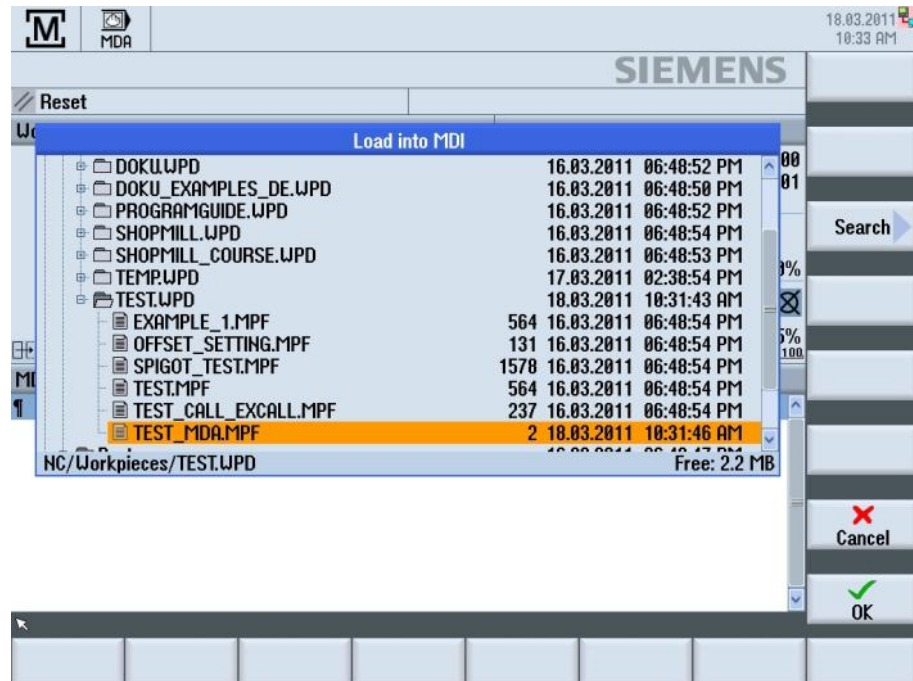
Notes

3.1 Selecting the function "Load MDI"



**Load
MDI**

By pressing the HSK1 "Load MDI" the "Load into MDI" window with the Program Manger is displayed as below:



To navigate in the program manager window use the blue cursor-keys
The following operation options are available in the vertical softkey bar to the right:

3.2 Vertical softkey bar

Display area

Description



Search

Press the VSK 3 "Search" to open the "Find file" window.



Cancel

Press the VSK 7 "Cancel" to close the "Load into MDI" window.



OK

By pressing the VSK 8 "OK" the marked program will be opened after closing the window "Load into MDI" and taken over in the MDI-window.

If a program is already in the MDI-buffer, you will be asked to overwrite. Accept with "OK" or refuse with "Cancel". A program loaded in the MDI-buffer can be edited or can be executed by pressing the "CYCLE START"-button on the MCP

3.3 Loading a MDI-program

1. Switch to operating mode "MDA" (see section 2. 1).
2. Press the VSK 1 "Load MDA".
The "Load into MDI" Program manger window opens.
3. Mark the program you want to load with the orange cursor-keys.
4. Press the VSK 8 "OK".

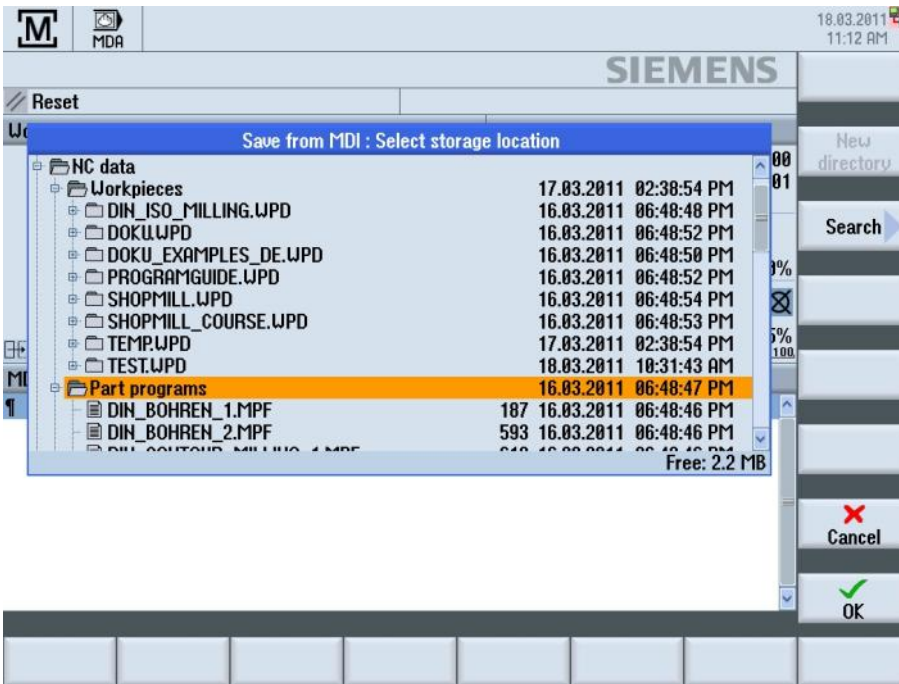
The window closes and the program is ready for machining.

4.1 Selecting the function “Save MDI”

Notes



By pressing the HSK2 “**Save MDI**” the “**Save from MDI : Select storage location**” window with the Program Manger is displayed as below:



Navigate through the program manager window by means of the blue cursor-keys.

The following softkeys are available in the vertical softkey bar.

4.2 Vertical softkey bar

Display area

Description



By pressing the VSK 1 “**New directory**“ a new directory can be created in the “**Local drive**” folder. An input window opens where a name can be entered for the new directory that is to be created. Create a new directory by pressing the VSK 8 “**OK**” or abort with pressing the VSK 7 “**Cancel**”.

The “New directory”-softkey is not active if you have placed the cursor on or in the “**NC data**” directory.



Press the VSK 3 “**Search**“ to open the “**Find file**” window.

Notes

Display area**Description** (*continuation*)

By pressing the VSK 7 “**Cancel**” the “**Save from MDI**” window will be closed without saving.



By pressing the VSK 8 “**OK**”, with the cursor on a folder, the “**New G code program**” window opens. Select the file type (Main program: MPF/ Subprogram: SPF) that you wish to create. After input of the filename the program will be written from the MDI-buffer to the new created file or the file that is marked with the cursor.

4.3 Saving a MDI-program

1. Select the operating mode “**MDA**” (see section 2.1)
The “MDI” editor opens.
2. Create the MDI program by entering the G-code commands using the keyboard.
3. Press the VSK 2 “**Save MDI**”.

The “**Save from MDA : Select storage location**” window opens. It shows you a view of the program manager.

4. Select the drive to which you want to save the MDI program you have created, and place the cursor on the directory in which the program is to be stored.
5. Press the VSK 8 “**OK**”.

Note:

When you place the cursor on a folder, a window opens which prompts you to assign a program name.

When you place the cursor on a program, you are asked whether the file should be overwritten or not.

7. Enter a name for the program and press the VSK 8 “**OK**”.

The program will be saved under the specified name in the selected directory.